

The background is a dark, deep blue space filled with intricate, glowing patterns. Swirling, ethereal lines in shades of cyan and light blue create a sense of motion and connectivity. Interspersed among these lines are numerous small, bright particles, some appearing as tiny squares or rectangles, others as simple dots. The overall effect is that of a complex, dynamic network or data stream, reminiscent of a digital universe or a futuristic data visualization.

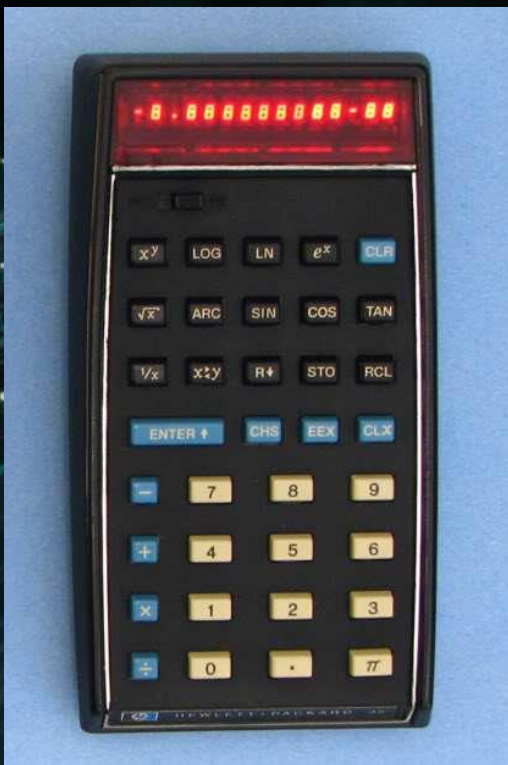
# Jak se mění IT okolo nás

Jan Kameníček, Hewlett Packard Enterprise

22. listopad 2022

# Jak jsem se dostal k výpočetní technice

1976 – poprvé jsem uviděl  
kalkulačku



1984 – nástup do Kancelářských  
strojů



1991 – nástup do firmy Digital  
Equipment



# Boj mezi spotřebitelem a dodavatelem IT

Mainframe



Klient - server



Public Cloud

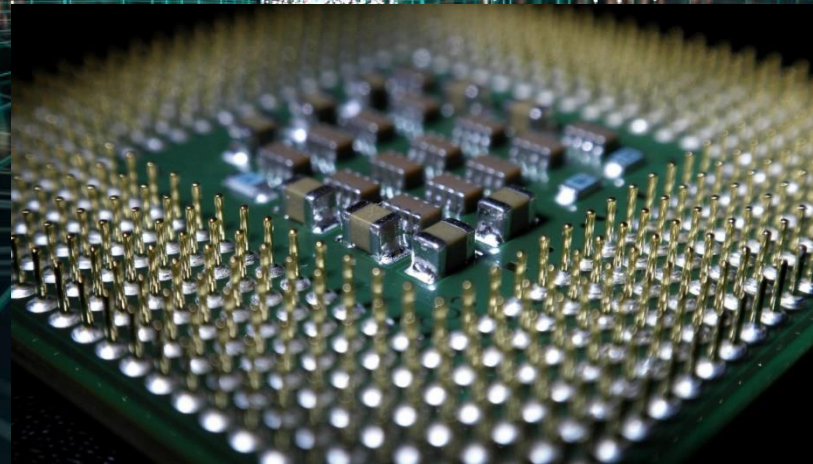
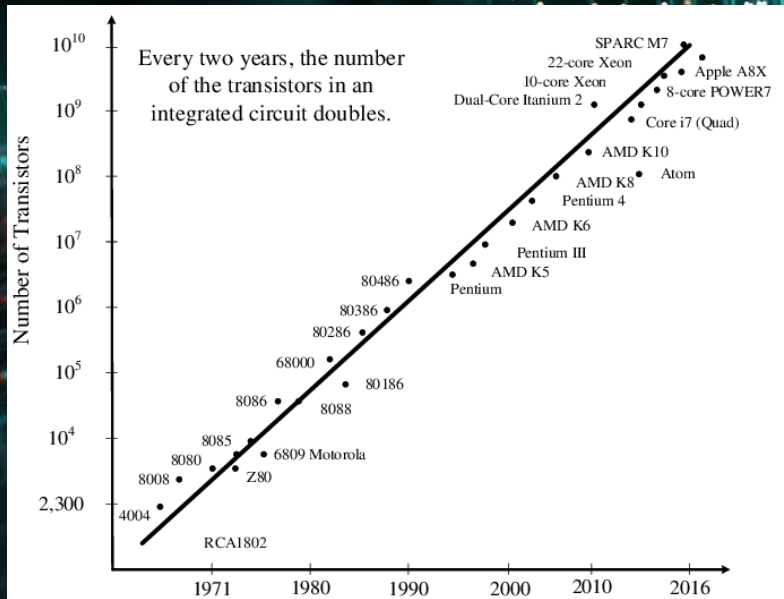


# Jak se změnil HW za posledních 30 let ?

Moorův zákon pořád platí

Více jader, virtualizace jader,  
menší spotřeba energie

Silicon As A Service

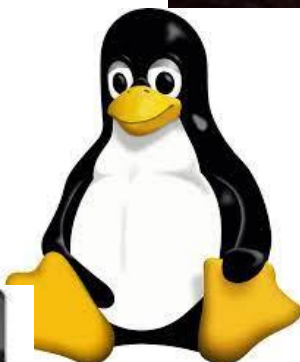


# Poslední 3 dekády ve zkratce

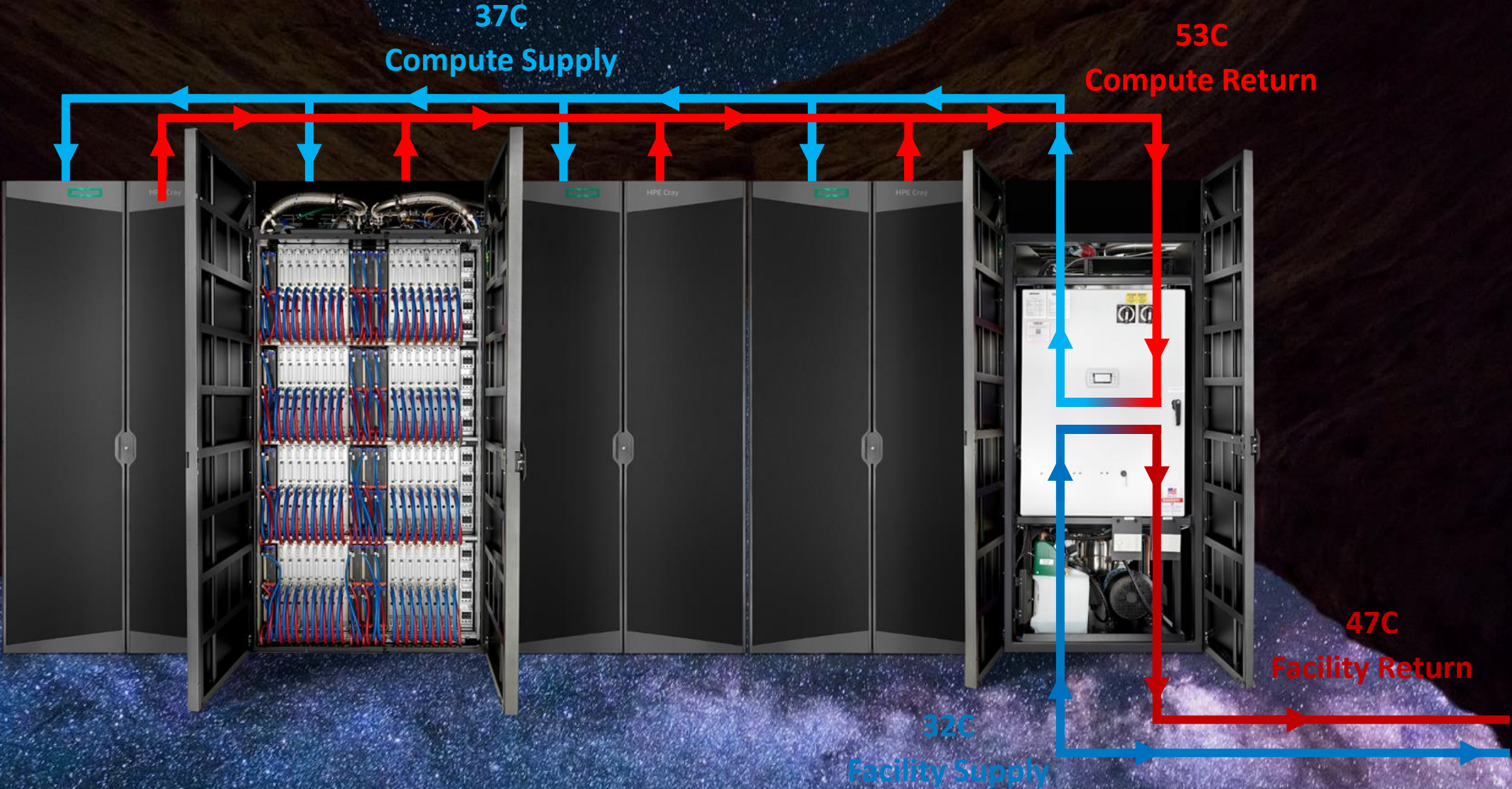
90tá léta

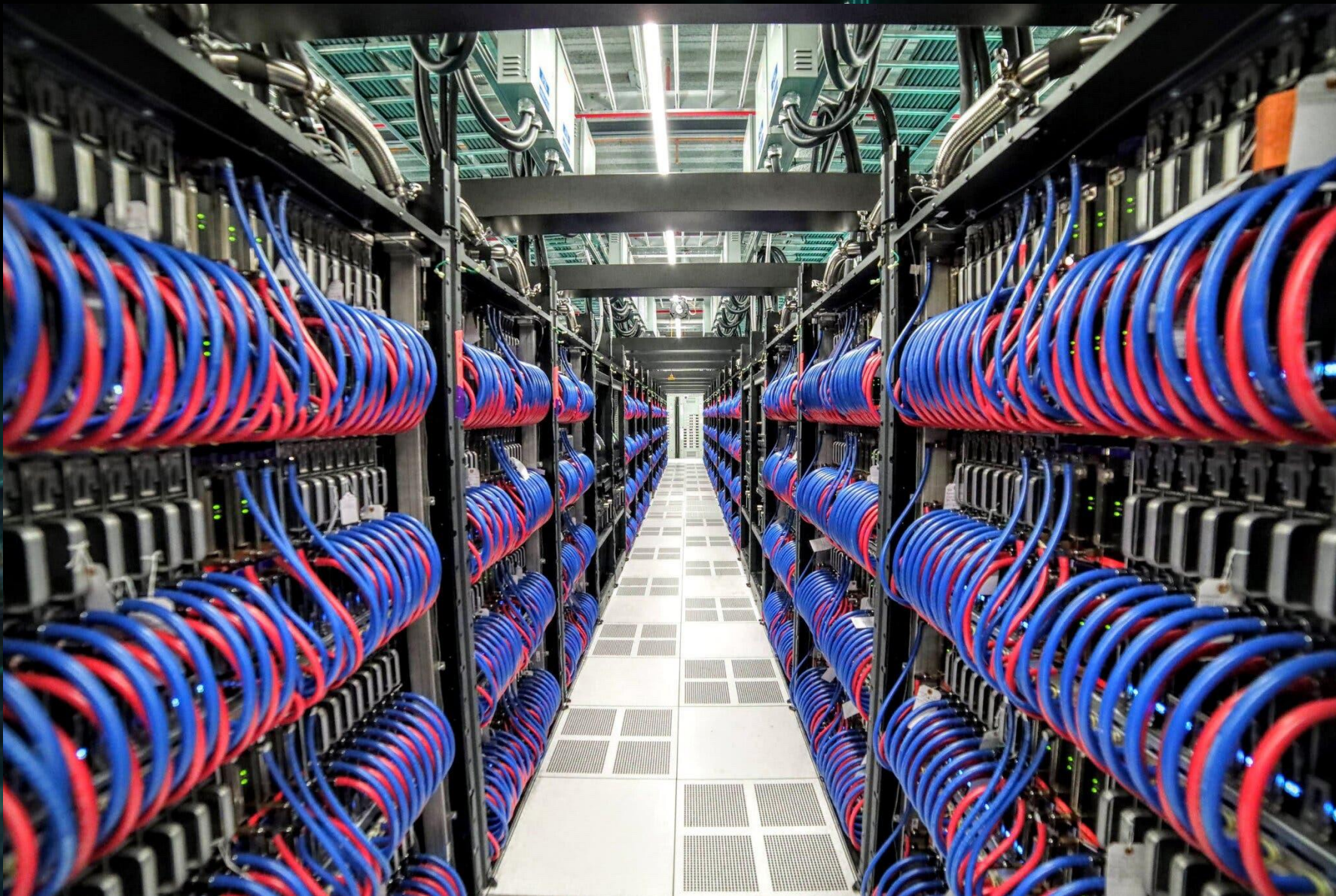
Léta 2000 – 2020

Dnes : Exascale =  $10^{18}$  FLOPS



# HPE Cray EX4000





 **OAK RIDGE**  
National Laboratory

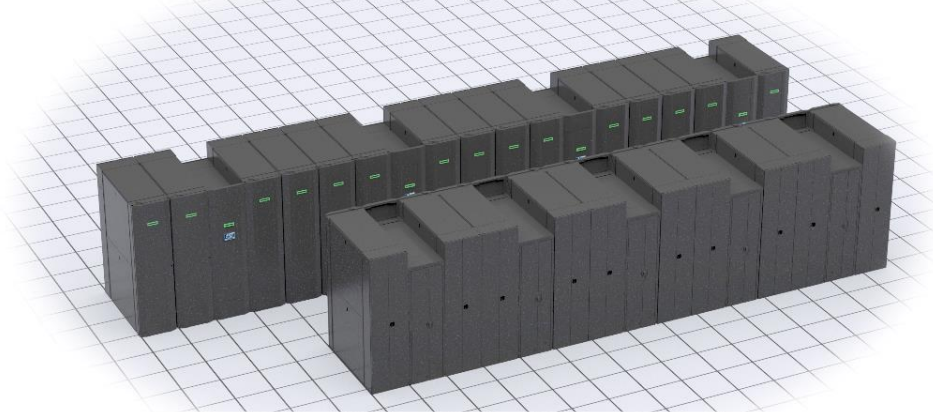


Ps

**#1** TOP500

**#1** Green500

**#1** HPL-AI



A promotional banner for the Supercomputer Karolina. The top left corner features the logos for VSB Technical University of Ostrava and IT4INNOVATIONS National Supercomputing Center. The main part of the banner shows a close-up of a white and blue robotic hand reaching out from a teal rectangular opening. The text "SUPERCOMPUTER KAROLINA" is displayed in large white letters on the right. At the bottom, there are logos for the European Union, the Ministry of Education, Youth and Sports, EuroHPC, and Hewlett Packard Enterprise.



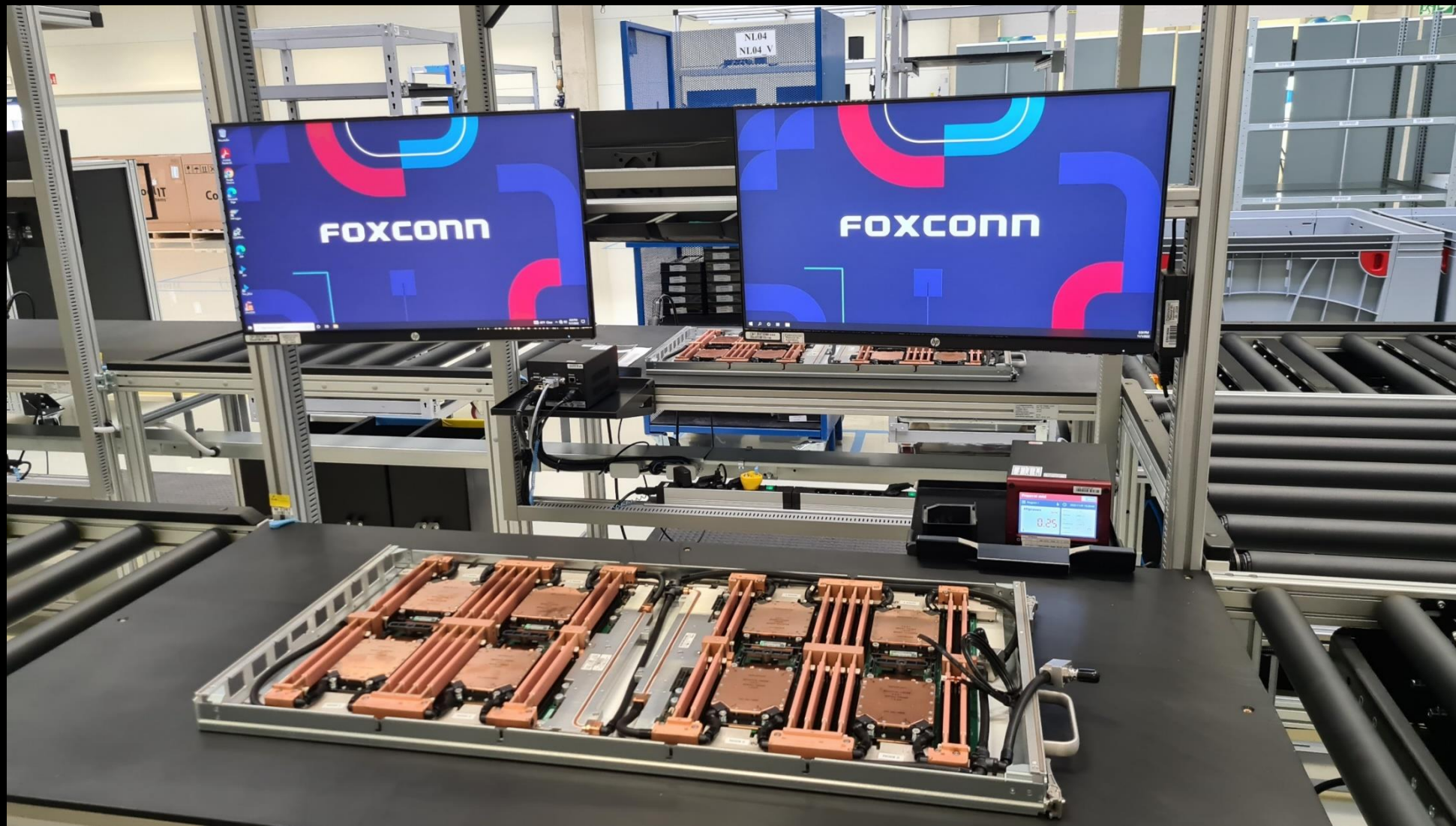
[YouTube](#)



# OTEVŘENÍ HPC PRODUKČNÍ LINKY V KUTNÉ HOŘE



# KOMPLETAČNÍ LINKA UŽ JE V PROVOZU OD PODZIMU 😊



**Děkuji Vám za pozornost a přeji hezký den 😊**

